



SHAPE

SUSTAINABLE HERITAGE AREAS: PARTNERSHIPS FOR ECOTOURISM

Ed Forrest - Galloway and Southern Ayrshire UNESCO Biosphere



Northern Periphery and
Arctic Programme
2014-2020



EUROPEAN UNION

Investing in your future
European Regional Development Fund



GALLOWAY AND
SOUTHERN AYRSHIRE
BIOSPHERE

Sustainable Heritage Areas



To Address Local issues

- Land Use Pressures
- Economic Challenges
- Rural Depopulation
- Changing Demographic
- Climate Change

And Celebrate Local Opportunities

- Rich Natural Environment
- Cultural Heritage
- Commitment to Sustainability
- A desire to influence change

Why do we need Governance? SHAPE



Northern Periphery and
Arctic Programme
2014-2020



EUROPEAN UNION

Investing in your future
European Regional Development Fund



GALLOWAY AND
SOUTHERN AYRSHIRE
BIOSPHERE

Definition of Governance



- “the interaction among structures, processes and traditions that determine how power and responsibilities are exercised, how decisions are taken, and how citizens or other stakeholders have their say” Governance Institute of Canada
- Governance for SHAPE is defined as;
“the structures and processes that determine how power is exerted, how decisions are taken and how stakeholders are included.”

Types of Governance



Type of Area	Governance Structure (IUCN, 2013)	Governance Process (Bouwma et al., 2010)
UNESCO World Heritage Sites	Government	Hierarchical
UNESCO Biosphere Reserves	Shared Government	Participatory
National Parks	Government	Hierarchical
Regional Parks	Government	Hierarchical
Natura 2000	Government/Shared	Network
UNESCO Geoparks	Shared Government	Participatory
Private Conservation Areas	Private Governance	Various governance styles
Public-Private Partnerships	Shared Governance	Various governance styles
Commons	Community Governance	Network

Challenges for Governance



- Sustainability and Sustainable Development
- Funding and Resources
- Stakeholder Engagement
- Branding and Communication

Principals of Good Governance



Principles	Process Indicators
Participation/inclusiveness; legitimacy; communication/connectivity	Is the governance system founded on integrity, with open communication and the opportunity for all stakeholders to participate in decision-making and exert influence on it?
Rule of law	Does the SHA adhere to the overarching laws and regulations pertaining to the area?
Transparency; conflict management/consensus orientation; fairness/equity	Is the decision-making process visible and clear with fair consideration for all, and with effective moderation of conflicting views and interests?
Performance/responsiveness; efficiency & effectiveness/capability; direction/strategic vision	Are the systems, plans, resources, skills, leadership, knowledge and experience in place to produce effective outcomes that form part of clear objectives based on a long-term perspective?
Accountability	Does performance reporting evidence clear identification of roles and responsibilities, and demonstrated acceptance of these?
Resilience/adaptability	Is the governance system able to absorb disruption and respond to change, maintaining a good balance between flexibility and security?
Integration	Is the governance system fully integrated, horizontally and vertically, with priorities, plans and activities aligned across it?
Learning mechanisms	Is thorough evaluation and review conducted, with systematic processes used to incorporate learning and adapt practices?



Northern Periphery and
Arctic Programme
2014-2020



EUROPEAN UNION

Investing in your future
European Regional Development Fund

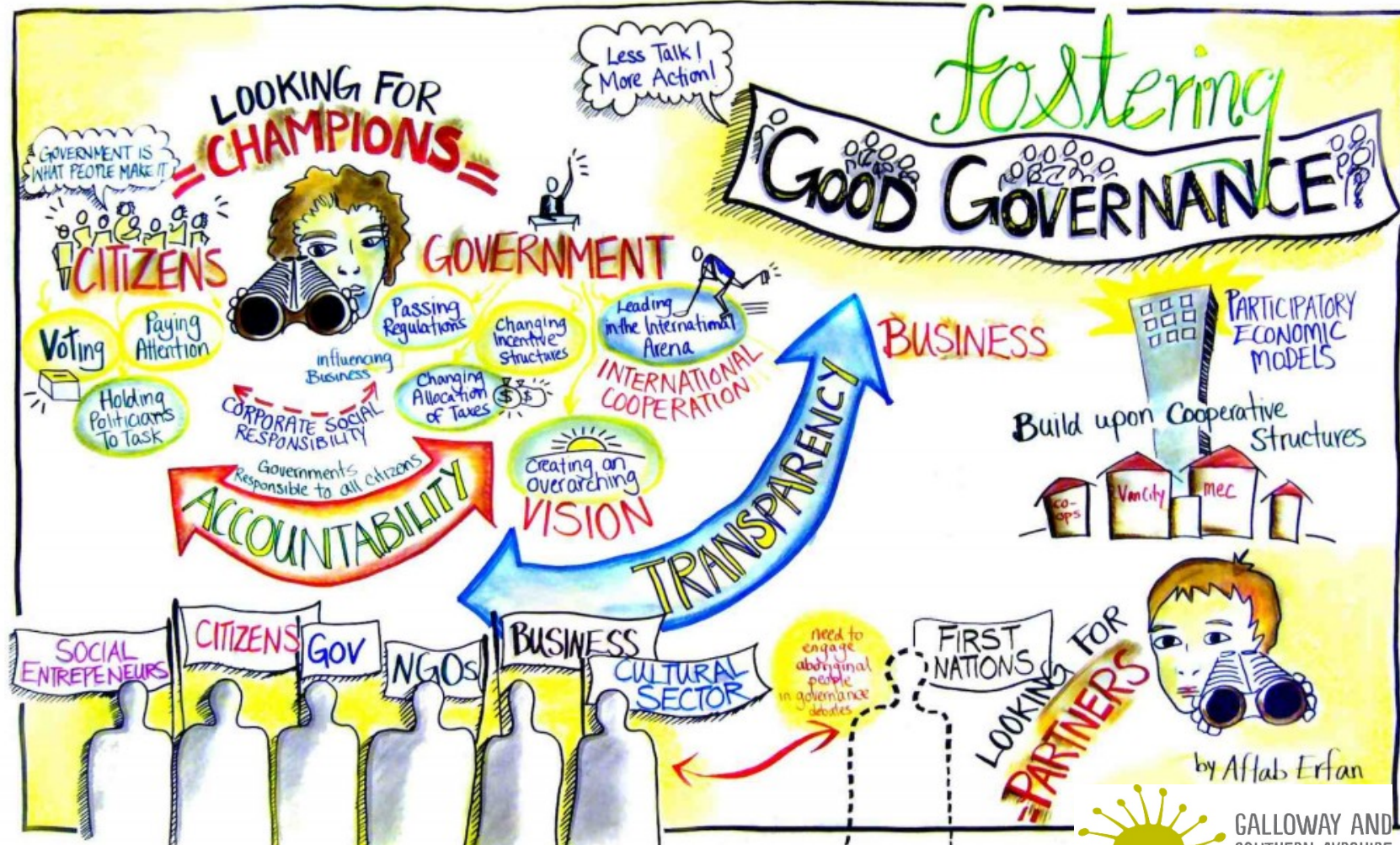


GALLOWAY AND
SOUTHERN AYRSHIRE
BIOSPHERE

Establishment of SHA's



- Conservation, Sustainable Development and Learning
- Establishment Process
- Monitoring and Evaluation
- Evolution of Governance Structure



Workshop



Four Questions based on;

1. Legitimacy
2. Resilience
3. Efficiency and Effectiveness
4. Resource for Management

15 minutes per question then feedback



Thank -You